

CATALOGUE

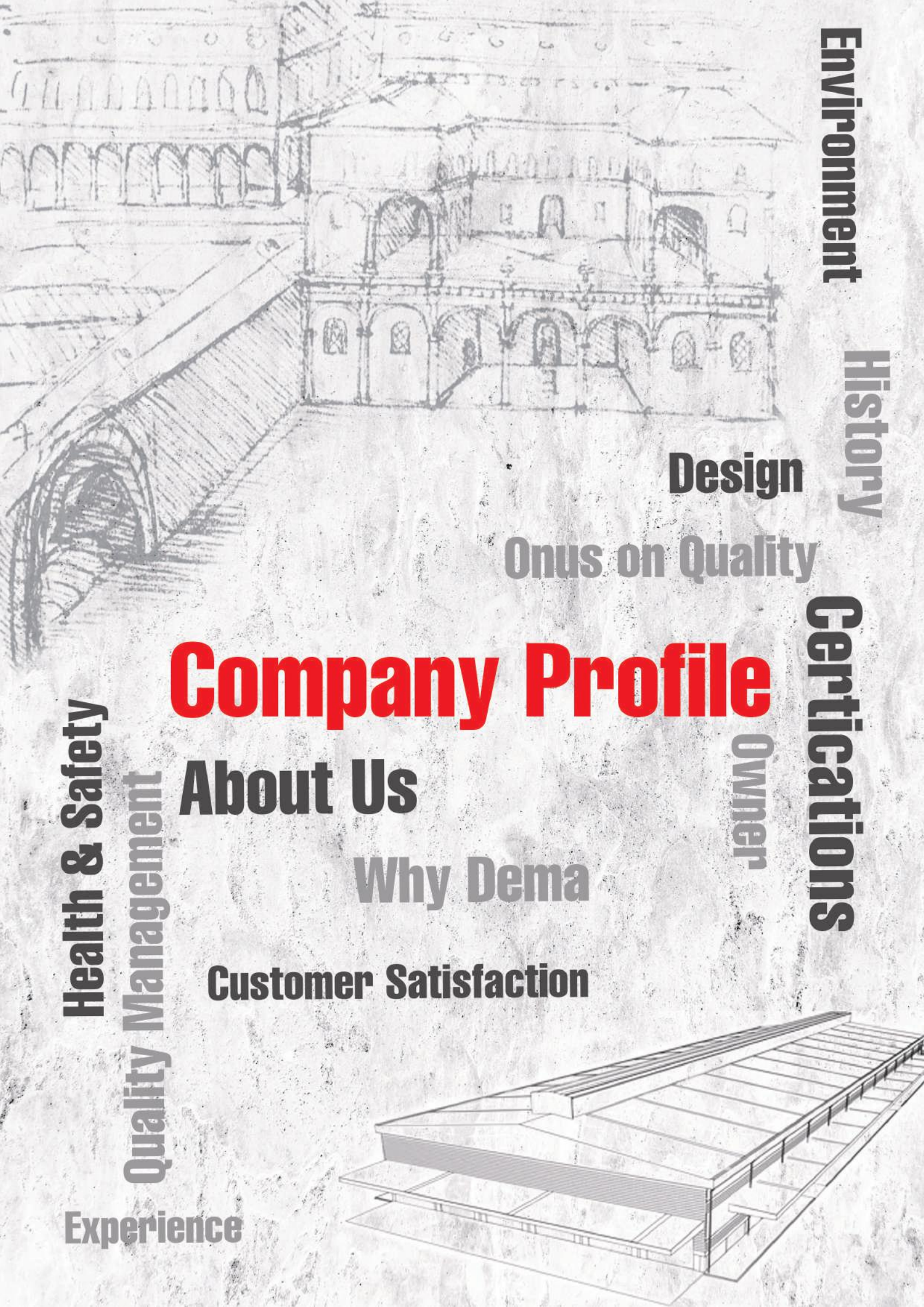
Steel Design Artistry

*"Details make perfection,
and perfection is not a detail."*

L.DA Vinci 1507

INDEX

01	Company Profile	03 - 10
02	Product Range	11 - 14
03	Tunnel Form Systems	15 - 32
04	Infrastructure Formworks	33 - 40
05	Precast Formworks	41 - 54
06	In Situ Casting Formworks	55 - 58
07	Special Manufacture & Outsource	59 - 64
08	Steel Design Projects & Manufacture	65 - 70
09	Tunnel Form Apply	71 - 74
10	References	75 - 76
11	Multimedia	77 - 78
12	Upcoming Projects /R&D	79 - 82



Environment

History

Design

Onus on Quality

Certifications

Company Profile

About Us

Why Dema

Customer Satisfaction

Owner

Health & Safety

Quality Management

Experience



Dreams do come true.... Our story so far!

Back in 2008 Oktay, owner of Dema Formworks, was an employed senior manager in a very successful and established formworks company with exports worldwide. The factory was located on 12,000m² of land and was purpose built, specifically designed for heavy formworks systems, steel works projects and precast manufacture. Oktay was the Projects Manager. He had worked his way up to this position over the years being promoted from the technical team as workshop drawings controller.

Then, in 2008 the world financial crisis hit and the factory closed. Experienced staff were laid off overnight, Oktay and around 100 workers were out of jobs, out of pocket and out of an industry they loved and in which they were successful.

Joining forces with a small crew of technical engineers, management and welders from his old workplace, Deneyim Makina (Dema Formworks) was born. They started with a small crew of expert welders and manufacturers, a core of staff that left with Oktay from the previous factory and with zero financing, the start was slow and road was precarious. They hired space and manufacturing time in another factory on profit share basis. Luckily customers from the previous business supported them with repeat orders and momentum grew and soon they required more space as the place they were timesharing could not cater to the demand.

Dema Formworks first factory unit was a rented 400m facility in an industrial unit in the city. Growth continued through attention to customer service and growing reputation and by 2011 they added another 800m² manufacturing unit and took on more staff, mostly from the original factory that had gone bust in 2008. In 2013 they moved to a 2500m² manufacturing unit and growth steadily continued with new product lines added and new markets opened. In 2014 they acquired a 10 acre industrial plot to build their own factory at a future date.

But sometimes plans change...in 2017 an opportunity arose. 'A factory' had become available perfect for their manufacturing needs, for both their present and future growth...Oktay made a quick decision and they and their growing team of steel workers and welders moved into their new factory ...they moved home!

Yes, after almost ten years Oktay and around 60 of the previous factory's workforce have moved back into the factory they were forced to leave in 2008. The original factory that they had left as employees in 2008 had become available from the bank. This time he moved back in as company owner with effectively the same crews and workforce.

We warmly welcome you to visit our 'new' factory! Dreams do come true!



From humble beginnings with the company's official formation in 2011, Dema continues to grow exponentially and the company has increased its market share year on year since formation. With an enviable reference list to date including customers from Venezuela through to Mongolia, Dema Formworks has exported to a growing list of over 40+ countries on four continents and is becoming a truly global specialist steelworks manufacturer producing an extensive range of steel and formwork systems and solutions including precast formworks, infrastructure mould, steel projects and manufacturing and outsourcing to some of Europe's leading industries

To support our growth and constantly strive to improve in all our operations Dema Formworks has attained;

- ISO 9001:2015 Quality Management Systems Certification
- ISO 14001:2015 Environmental Management
- OHSAS 18001:2007 Health and Safety
- EN1091-1+A: 2011 Manufacture of Steel Components
- EN109-2:2008+ A1:2011 class 135 Welding Certification
- ISO 3834-2:2005 Manufacture of Steel Components
- ISO 9606-1:2013 Weld Qualification Certification
- TUV Nord Accredited WPQ & PQR Welding Certification



Dema Formworks is located in Ankara, Türkiye in a purpose built 12,000m² steelworks, formworks and precast mould manufacturing facility and project design centre. The 120m long factory building includes two manufacturing halls totalling 500m², a 1000m² finishing and painting area, a 900m² administration and management office area, and 5000m² of depot complete with both portal and tower cranes for loading customer orders. In planning for future growth, an additional site has already been acquired for a second facility and a purpose built 10,000m² manufacturing facility is in the design stages.

The company's international business is coordinated from its International Business Development Centre based close to Exeter in the UK. Customers worldwide are serviced through a select and growing number of representatives and agents.

Dema Formworks Unique Selling Point (USP) and difference is that it has a very hands-on approach and the owner is proactively involved in the day-to-day management of the company. Quality control and customer satisfaction is our driving force and we send our technical support staff worldwide to assist with assembly, installation and turn key handover of our steelworks and formwork / mould systems.

Dema strive to remember that our company's origins and foundation was based upon repeat business based upon customer satisfaction and retention and this philosophy is ingrained in the very ethos of every company operation. We take pride in our work no matter how big or small. With this management and manufacturing approach and winning attitude Dema Formworks is able to offer each and every customer and project the necessary care and attention to detail; maintain stringent quality control standards and deliver designs and products to a high standard yet at a competitive price point.

Dema Formworks would like to thank you for taking the time browse our company profile and we welcome your visit and/or your projects and the opportunity to become your long term formworks solution partner.



**OKTAY SOYSALTURK
GENERAL MANAGER & FOUNDER**

A graduate engineer with a degree in Mechanical Engineering specializing in Mechanics.

In 2001 Oktay Soysaltürk, the owner of Deneyim Makina manufacturing company and Dema Formwork exporting company, entered the world of formworks and steel construction with a position at Panel Machinery then Türkiye's leading formworks manufacturer, with a diverse portfolio of manufactured products and solutions. Oktay started with a position as workshop drawings controller preparing the project drawings for manufacture.

In 2003 he was promoted to Manufacturing Manager and with hard work and diligence he was again promoted in 2005 to Projects Manager. With the closure of the company in 2008, Oktay with responsibility for his teams of trusted and competent workers and demand from many of his international customers decided to find a venue to continue manufacturing.

In 2009 through to 2011 he successfully transitioned some of his experienced team as a special formwork projects design and manufacturing crew time sharing factory space and profit-sharing manufacturing under the Bayraklar Machinery brand name. There his task was to source customers and designing and manufacturing formworks and steel construction projects.

Growing exponentially and realizing the need to take the risk of his own manufacturing space to improve manufacturing capacity and product offering Oktay and his team started their own company Deneyim Makina (meaning Experience Machinery) which trades under the brand name Dema Formworks exporting internationally.

Oktay is owner and General Manager of the company, but just like in the past he is very much 'hands on' being involved in all aspects of the companies' daily operations, growth and development. By this method Oktay ensures each important new client and many returning customers are given the individual speciality attention needed to ensure individual project success.

Today after just 14 short years Dema Formworks is proudly exporting its manufactured steel products and technical expertise and support to a growing portfolio of clients in 40+ countries worldwide on four continents.

Dema sets its target to export to least 80 countries worldwide and is taking firm progressive steps towards forward achieving that goal.

Thank you for taking the time to look at the manufacturing expertise and product range that Dema Formworks offer. Please note that when studying the catalogue that particularly in regards to steel projects and precast industries the possibilities are a veritable 'ocean' in terms of design opportunities and variety.

The DEMA name derives from the letters forming the acronym

Design
Engineer
Manufacture
Apply

And this is the foundation of what we do we Design, Engineer, Manufacture and Apply our steelwork solutions on projects worldwide.

It is impossible to list the one off, unique projects and countless designs we have been involved in. If you have a particular steel project or a particular precast or concrete design requirement and you need assistance, then please do not hesitate to contact us. If it is shaping concrete using steel forms or moulds or if it is steel manufacture, we like to think our team will be able to meet your inquiries and come up with a design solution. That is why our motto is simply.

'Steel Design Artistry!

WHY CHOOSE DEMA FORMWORKS?

Highly experienced team offering top quality products at a competitive price. Dema is a company with drive, a big heart and bags of talent!

If you have read the previous history of the company, you will understand our driving goals and company ethos. Dema was created by its workers for its workers and our aim is to create a sustainable company offering a secure working environment for employees old and new. We believe that to do this we need to offer a quality product and service at a truly competitive price.

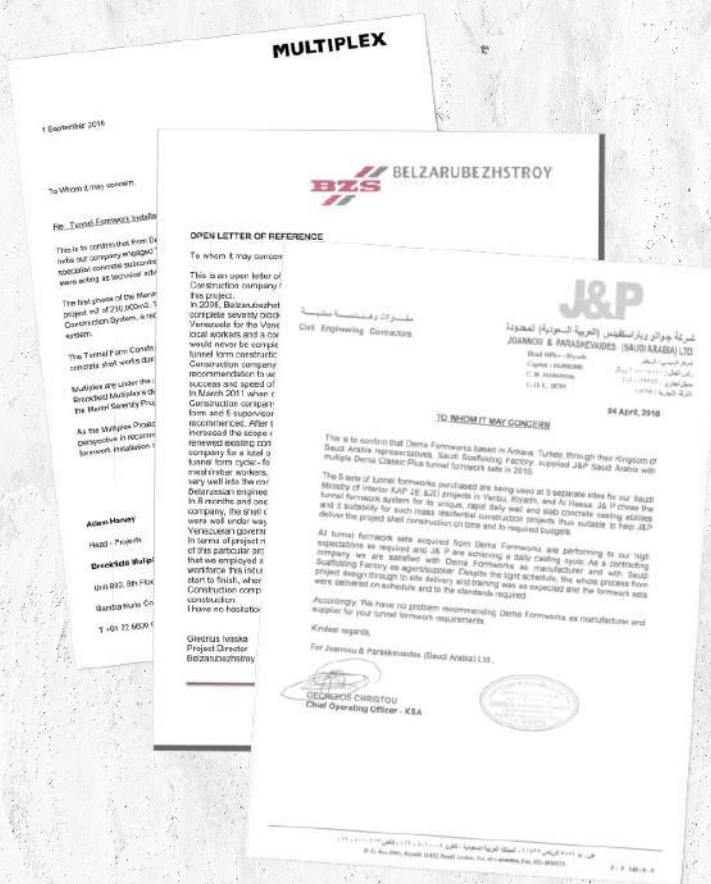
As a young and dynamic company, Dema has an extensive talent pool of formwork, steel and precast design and manufacture experience in its owners, managers, project department and factory employees. Utilising this skillset, Dema has a fantastic opportunity to strengthen and broaden its product offerings. Dema Formworks recognizes it needs to be progressive thinking, and invest time and energy in R&D and be diverse in its' product offering yet never forgetting its primary directive which is to offer an unmatched quality to price ratio.



ISO9606-1:2013 Weld Qualification Certification also WPQ and PQR Certification accredited by TUV Nord

With an onus on establishing both local and international clientele relationships for long term repeat custom, Dema is well placed for continued growth. As a hands-on company with the management involved at every aspect of the customer journey up to and including service and installation & site visits; our clients are assured personal attention at every stage of the manufacturing, delivery and installation process.

This approach has resulted in our steady growth and in Dema Formworks establishing a solid client base. By continuing this steadfast approach, we strive to ensure satisfied customers, repeat orders and continued growth.



Selected testimonials- Customer satisfaction is very important to Dema Formworks

INDUSTRY RECOGNIZED QUALITY CERTIFICATES

WE AIM FOR QUALITY IN EVERYTHING WE DO

Our job is moulding and shaping steel for a wide range of structural steel applications and also shaping steel into designs to help companies provide moulds and precasting delivery systems for concrete.

We also design specialist formworks for offsite, direct in situ, on site and near site applications in infrastructure and residential construction. Accordingly, our staff our rained to the highest international standards.



Dema Formworks Quality Management System is important to our business simply because we value our customers. We strive to provide our customers with products and services which meet and exceed their expectations.

We are committed to continuous improvement and have established a Quality Management System which provides a framework for measuring and improving our performance.

We have the following systems and procedures in place to support us in our aim of total customer satisfaction and continuous improvement throughout our business practices:

- Regular gathering and monitoring of customer feedback.
- A customer complaints procedure.
- Selection and performance monitoring of suppliers against set criteria.
- Training and development for our employees.
- Regular audit of our internal processes.
- Measurable quality objectives which reflect our business aims.
- Management reviews of audit results, customer feedback and complaints.

Our internal procedures are reviewed regularly and are held in a Quality Manual which is made available to all employees. We have rigorous quality assurance procedures in place to ensure 'right first time' results. Our approach delivers significant improvements in the quality of the final manufacture and installation, in line with our zero defects philosophy.

Each manufactured element has an individual reference number and upon completion undergoes final inspection checks including, where applicable, weld and/or pressure testing. There is full transparency within our quality procedures.



SAFETY & HEALTH GOALS

By establishing effective HSE procedures and standards we aim to:

- Provide workers with a safe work environment with full consideration for their employee health whilst at work
- Conduct routine and regular workplace safety and health related inspections
- Provide Personal Protective Equipment and enforce utilization
- Develop and implement safety and health work procedures and rules and review routinely and regularly
- Provide ongoing and measurable safety training
- Enforce safety rules and appropriate discipline approach to work safety
- Provide ongoing property conservation practices

Our Health and Safety procedures are explained in detail in our Health & Safety Operational Manual. To summarize our activities are based primarily around minimizing risk associated with

- Working at height
- Hot works
- Noise and dust
- Material and manual handling



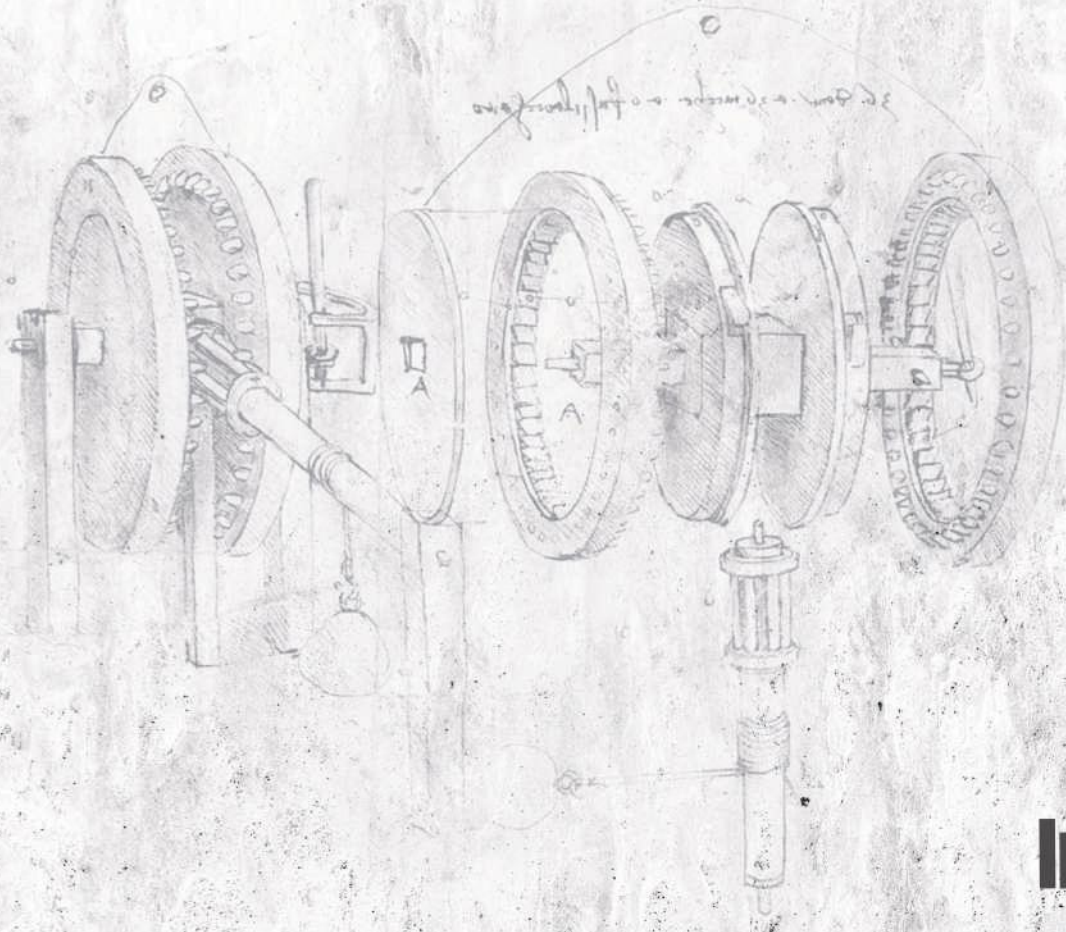
ENVIRONMENTAL MANAGEMENT

Dema Formworks aim is to have an environmentally sustainable ethos in all business activities. We engage at every phase of the manufacturing and delivery process to reduce waste, recycle and minimize environmental impact:

We are committed to diverting 90% of the waste we produce and have developed and implemented a waste management policy. In short, we are committed to

- Prevention of pollution and we monitor the effect of our operations on the environment and local community.
- An ethos of continual environmental improvement.
- Develop efficiency in the use of energy, water and materials.
- Implement and revise waste management, recycling and reuses procedures.
- Comply with all legislation relevant to our industry.
- Provide ongoing training to staff to enhance awareness of relevant issues and to ensure effective management of our environmental impacts





Steel Projects & Design

Infrastructure

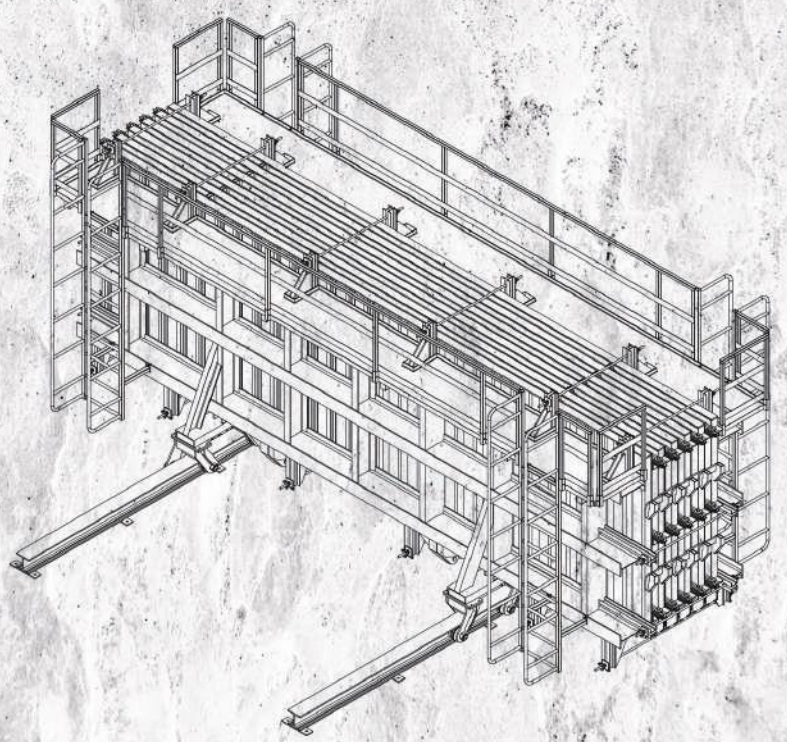
In Situ

Segment Residential Precast

PRODUCT RANGE

Slabtrack Precast Systems

A truly expansive range of expertise offered, from design to manufacture to turn key delivery across many construction and fabrication sectors



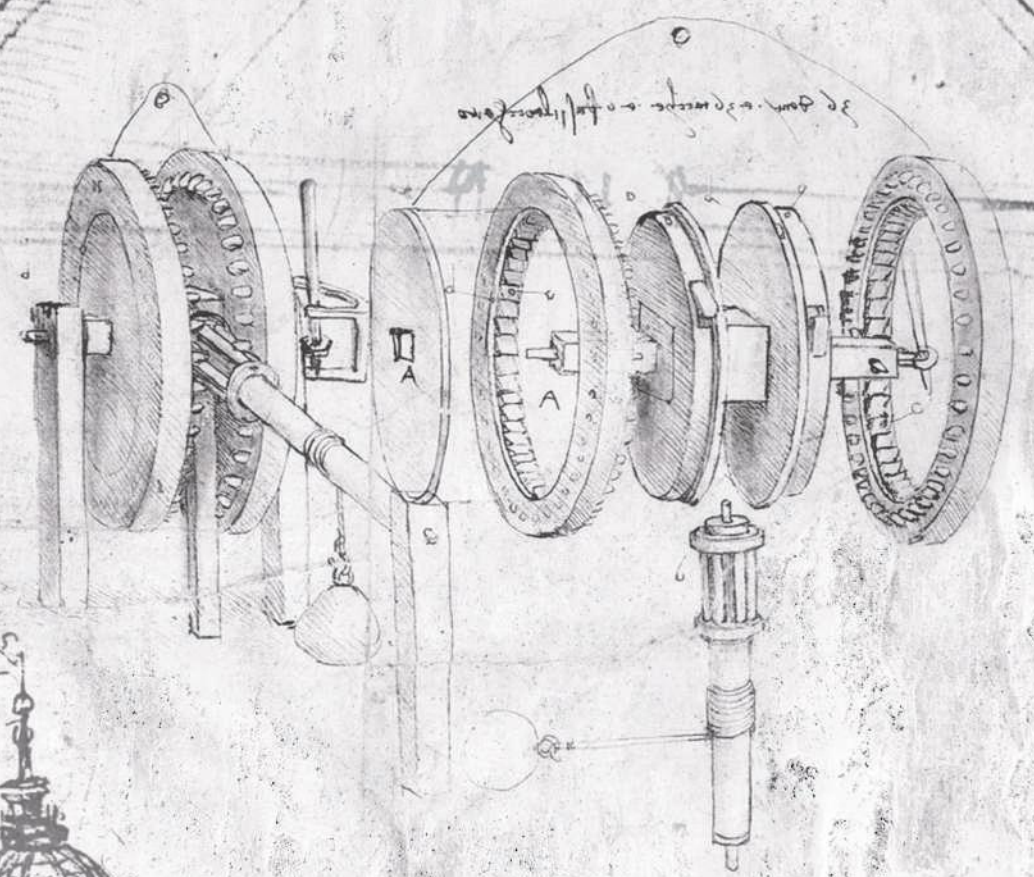
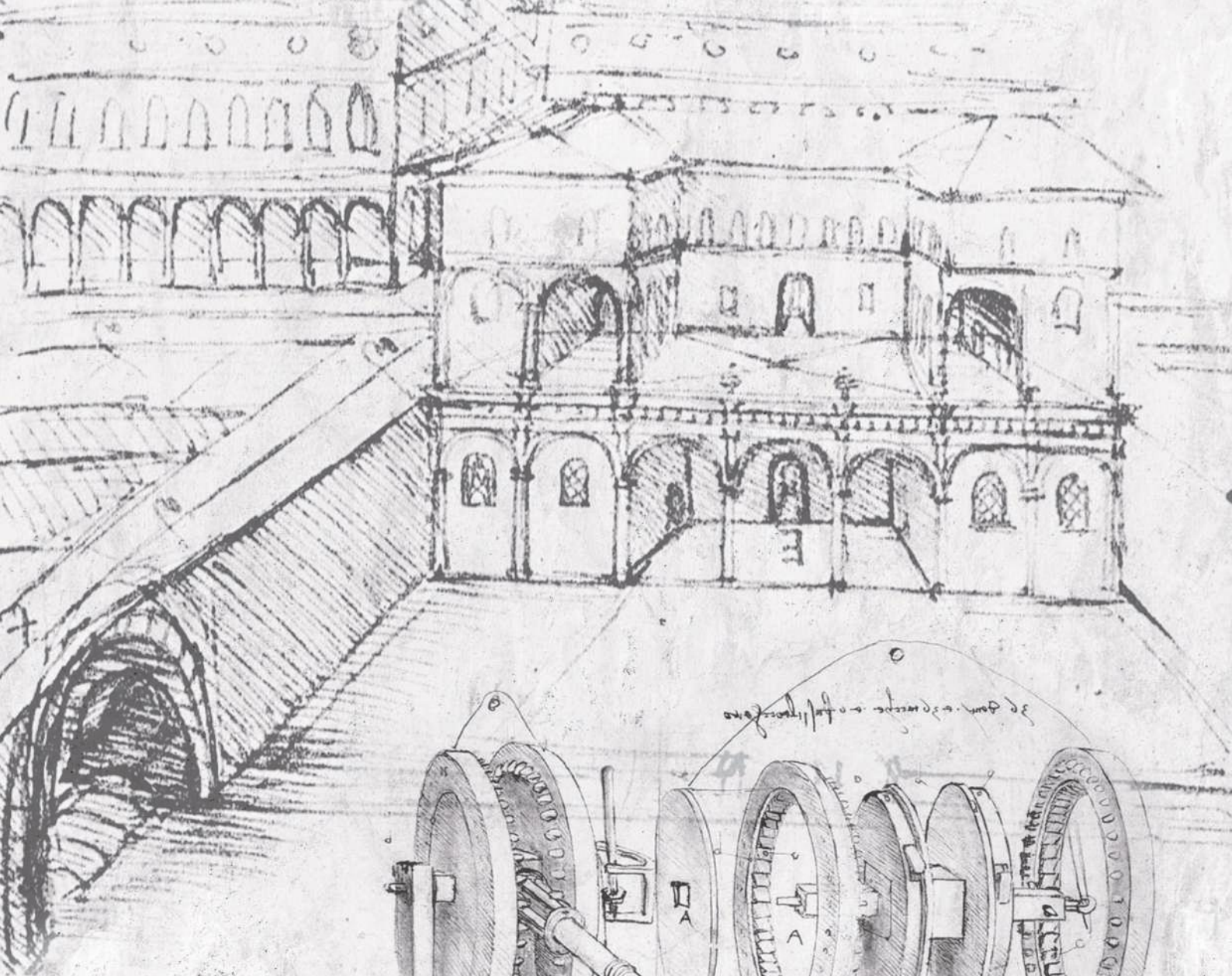
Rail Special Manufacture

Rail

Metro

Outsource

HST



*"Experience is a truer guide
than the words of other"*
L. DA Vinci 1507

Infrastructure

- NATM/Cut and Cover
- Segment Tunneling
- Railway Tunnelling
- Slabtrack
- Sleepers
- Pedestrian Tunnelling
- Metro Tunnelling
- Highway Tunnelling
- Dam Tunnelling
- Box Culverts
- Trench Shoring/Lining
- Gallery Formwork
- Siphon Formwork
- Energy & Water Tunnelling
- Invert Formwork
- Blacksmiths Cart
- Membrane Laying Trolley Vehicle

In Situ

- Residential Tunnel Formwork
- Columns- all types
- Shaft Core Wall Moulds
- Beam Formwork
- Lintel Formwork
- Foundations Formwork
- Piling Formworks
- Table Formwork
- Climbing Formwork
- Hydraulic Climbing Formwork
- Balanced Cantilever Girder
- Handset Wall Formwork
- Wall Formwork
- Retaining Walls

Steel Projects & Design

- All Types of Steel Buildings, Commercial, Industrial, Factories, Residential, Shopping Centres, Sports Facilities etc.
- Steel Pedestrian Bridges
- Platforms
- Special Steel Projects
- Factory Transport Systems
- Agricultural Steel Projects
- Dam & Hydroelectric Steel Projects

Precast

- Girder Formwork
- Pier Formwork
- Manhole Formwork
- Prestressing Systems
- Prefabricated Homes Formwork
- Column Mould
- Beam Mould
- Piling Mould

- I, H, L, T, TT Beam Mould
- Transformer Substation Moulds
- Transformer Substation Roof Moulds
- Telecommunications Logar Moulds
- Telecommunications Posts Moulds
- Slabtrack formwork Moulds
- Sleeper Moulds
- Segment Tunnelling Moulds
- Telecommunications Tower
- Water Channel Moulds
- Guttering Moulds
- Retaining Wall Block Moulds
- Motorway Barrier Moulds
- Foundation Formwork
- Prestressed Flatbed Moulds
- Prestressed Beam Formwork
- Purlin Mould for Roofing
- Roof Truss Formwork
- Garden Wall Formwork
- Stair Formwork
- Jersey Barrier Formwork
- Parapet & Drains Mould
- Crane Beam Formwork
- Stadium L,U,T,type Seat moulds
- Verticle Multi Battery Formwork
- Single Double /Twin wall moulds
- Single Double /Twin wall carousel
- Various Slab Moulds
- Horizontal Flatbed Table Formwork
- Tilting Table Formwork
- Verticle Multi Battery Formwork
- Turnkey Precast Carousel Systems
- Fence/Perimeter Formwork
- Security Wall Formwork
- Carousel Precast Systems

Special

- Modular Home Moulds
- Prefabricated Homes Moulds
- CDS- Concrete Distribution System
- Hydraulic Concrete Feeder Bucket
- Portal Crane System
- Transformer Cabin
- Prestressing Roll Steel Feeder
- Vacuum Room
- Trench Shoring
- Slag Handling Trailers
- Bomb Resistant Wall Formwork
- Gantry Cranes
- Mobile Gantry Cranes
- Façade Elements Moulds
- Military Aircraft Hangars & Depots
- Pre Stressing Feeder Machine
- Rebar / Mesh Bending Machines
- Crushing & Screening Systems
- High Volume Concrete Bucket
- All Types of Outsource Manufacturing

Industrial Building

- Complete Industrial Units
- Steel Construction Factories
- Concrete construction factories
- Industrial Fans
- Turnkey Precast Factories

Residential

- Tunnel Form Systems
- Prefabricated Villa Systems
- Column & Beam Systems
- Facade Panels
- Retaining Walls
- Solid and Twin Wall Moulds
- Omnia Slab Moulds
- Low-Cost Housing Systems
- Modular Housing Systems

Sports Facilities

- Stadiums Concrete and/or Steel
- Stadium Precast Seating
- Industrial Fans

Education

- Facade Panels
- Tunnel Form Systems
- Retaining Walls
- Garden Walls
- Steel Construction Buildings
- Concrete Construction Buildings
- Industrial Fans

Hotels

- Tunnel Form Systems
- Facade Panels
- Retaining Walls
- Steel Construction Buildings
- Concrete Construction Buildings
- Industrial Fans Commercial /Shopping Centres
- Tunnel Form Systems
- Wall Formwork
- Beam Formwork
- Column Formwork
- Climbing Systems
- Piling Formworks
- Foundation Formwork
- Steel Buildings

Agriculture

- Silos
- Grain Storage
- Steel and/or Concrete Farm Buildings
- Industrial Fans

Sewer / Sewage Treatments / Drainage

- Box Culverts
- Trench Lining

Roads

- Infrastructure Tunnelling

- Jersey Barrier Mould
- Pedestrian Bridges
- Retaining Walls
- Sound Barriers
- Industrial Fans

Rail / Metro

- Infrastructure tunnelling
- Railway Sleepers
- Slab Track
- Segment Formwork
- NATM/Cut and Cover tunnels
- Box Culverts
- Sleeper Transportation Vehicles
- Slabtrack
- Industrial Fans

Power / Hydroelectric

- Infrastructure tunnelling
- Underwater turbine's casings
- Transformer Substations

Military / Security

- Security walls
- Prison cells
- Military Housing
- Aircraft Hangars
- Storage Hangars
- Steel Buildings
- Concrete Buildings
- Military grade container buildings

Bridges

- Footing formwork
- Bridge support column formwork
- Pedestrian Bridges
- Balanced Cantilever Girder Form

Sea Defence

- Sea Retaining walls
- Undersea Pipe Protection Systems
- Tetrapods
- Underwater Turbines Casings

Mining

- Infrastructure Tunnelling
- Box Culverts
- Trench Shoring/Lining

Containers & Temporary Facilities

- Military Grade Container Buildings
- Lightweight Container Buildings

Production / Transportation Systems

- CDS- Concrete Distribution System
- Hydraulic Concrete Feeder Bucket
- Carousel Formwork Mould Lines

Formwork

Villas

Hotels

Concrete

Fast Track

Design

Government Housing

One day One floor

Prisons

Residential

Mass Housing

Buildings

Student Dorms

Tunnel Form Systems

Mid-rise Apartments

Luxury Condominium

Social Housing

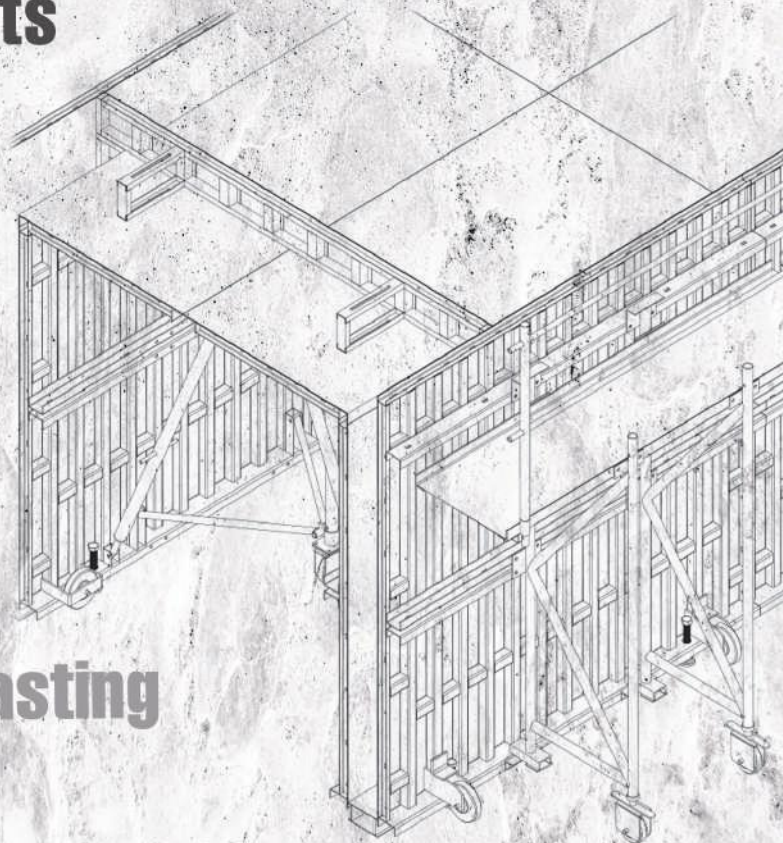
Terrace Housing, High Rise,
Mid Rise, Social Housing
Affordable Housing, Fast
Track Luxury Homes,
Prisons, Modern Method of
Construction Industrialized
Building System, 60 years+

High-rise Apartments

24hr Cycle

Daily Casting

Affordable Housing



The quickest way to build economical high quality housing...
Proven worldwide for over 60 years.

The tunnel form system is the only way to build and complete upto 500m² of concrete wall and slab casted in one go daily. That's a full 5 x 100m² homes daily or a single 500m² luxury multimillion dollar villa completed daily in a single casting period.
There is no quicker way to build.

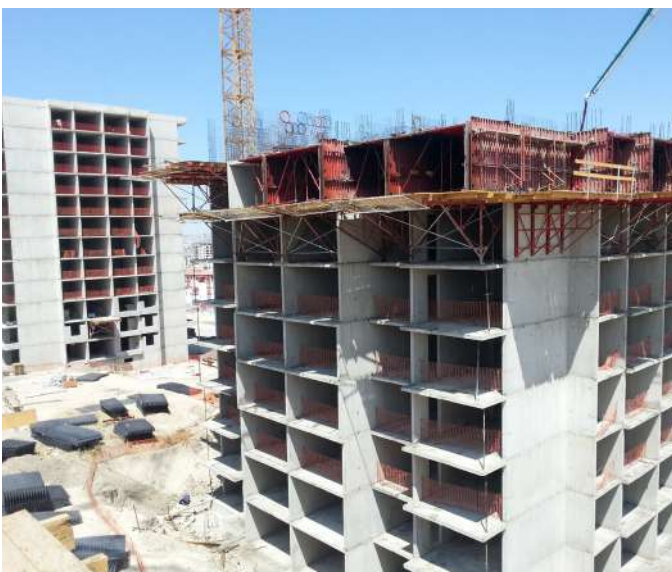


The construction method of choice for governments, astute developers & contractors worldwide...

A viable method to end world housing shortages.

Whether its mass social housing, luxury villas, high rise condominiums, student dorms, government housing, prisons, hotels, terraced houses, town houses or one-off custom build luxury house builds tunnel form is an option.

Tunnel form methodology is also preferred in areas of earthquake and natural disaster tornado and hurricane resistance zones.



Al-Ameerat Residential- Project 1-Baghdad, Iraq

The Al-Amirat Phase 1 Residential Complex is considered one of the most successful quick build high quality residential projects in the country. It is located in the holy city of Najaf. Dema company successfully fast tracked the project build, resulting in the developers successful marketing and the complete sale of all residential units in record time.

The project's designs of 3 types of duplex villas adhere to the urban planning standards set by the Iraq Ministry of Housing and the project overall design include comprehensive services and infrastructure.

The complex comprises 1500 residential units available in three different villa styles, all of which were sold within a short period.

Project Area: 308,000
Timeline: 30 months (For shell construction)
Villas: 1500



Al-Ameerat Residential- Project 2- Baghdad, Iraq

Following the success of the first Al-Amirat Residential Complex in Najaf, the same company has initiated the development of Al-Amirat Residential Investment Complex 2. Dema spent many hours with our technical, architectural and structural teams adapting this project to daily villa completion methodology. 8 Sets of tunnel form utilized on the project.

Due to the high demand on Al Ameerat 1 first phase, this new Al Ameerat 2 Project featured 3,180 residential units in three styles: Style A (300 square meters), Style B (250 square meters), and Style C (200 square meters).

The complex includes a range of modern service facilities, such as shopping malls, green spaces, schools, health centres, a civil defence unit, and other amenities suitable for a contemporary residential community.

Al- Ameerat 2 Complex Project Details

Project Area: 1,700,000

Timeline: 36 months (For shell construction)

Villas: 3180



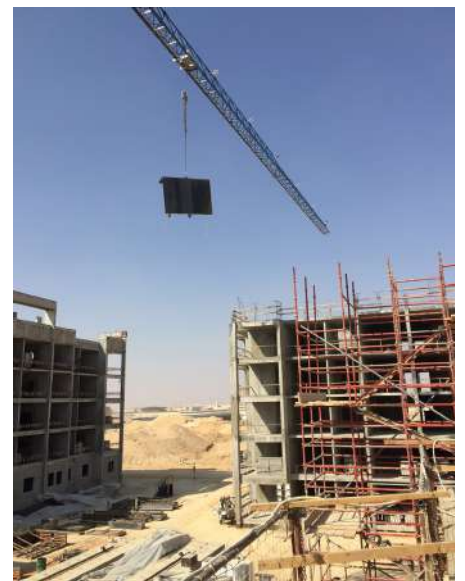
Najaf Gardens Complex- Project 3- Baghdad, Iraq

Najaf Gardens Complex boasts a strategic location, just 10 minutes from the airport and 5 minutes from the historic city center. Planned as 1,700 duplex villas with three types. Style A (300 square meters), Style B (250 square meters), and Style C (200 square meters). Due to the fantastic high demand on both Ameerat 1 first phase, and Al Ameerat 2 Projects 8 Sets of tunnel form utilized. A challenging design for tunnel form. The developers spent many hours with the Dema design team adapting the project for fast economical daily casting. Project includes shopping centres, 4 primary, 2 middle and 2 preparatory schools, and sports and recreational facilities

Project Area: TBA
Timeline: 24 months (For shell construction)
Villas: 1700



Ministry of Housing - Yanbu, Jeddah and Riyadh - Kingdom of Saudi Arabia
Tunnel formwork in action at two of our multiple residential tunnel form sites in Yanbu, Jeddah and Riyadh



Al Rashid/ Artar- Riyadh and Al Khamis - Kingdom of Saudi Arabia
With successful project over the past 10 years in KSA Demsa are a leading force in the mass social and luxury housing in KSA in locations such including Jeddah, Yanbu, Al Ain, Mekkah, Khamis Musait & Riyadh



Bahçe'n, Ankara, Türkiye
Residential, Tunnel Formwork. Bahçe'n consists of 9 block of 618 luxury 4+1 apartments of 170m² (155m² net) Full shell construction completed in just 6 months

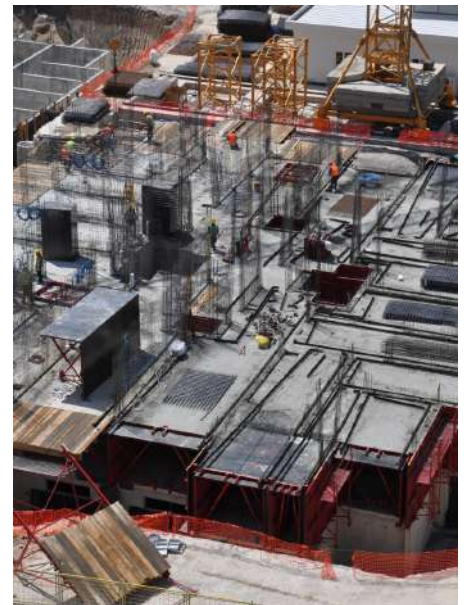


Bahçe'n Elvankent, Ankara, Türkiye

Follow up project from the same company adapting the original formwork from the previous Bahçe'n project and with the same momentum 10 blocks of 14 floors were completed in just 6 months with just two half floor sets and the units were presold early and the project was delivered in just a further 18 months



Bahçe'n Dört mevsim, Ankara, Türkiye
For their third project the formwork was revised and renewed and Bahcen Dort Mevsim a prestigious project of 360 apartments of 2 apartment types was born. The 7 blocks of the project were completed in seven months with just two adapted half floor sets. 2 apartment types



Bahçe'n Panorama, Ankara, Türkiye
The latest Tuna project a 22 floor building completed with limited crews in 6 months



Esenyurt Towers, İstanbul, Türkiye
Luxury Apartments, İstanbul - Esenyurt Residential Tunnel Formwork



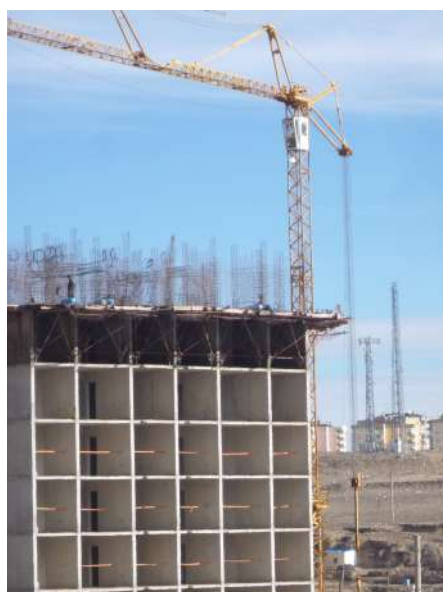
Innovative Affordable Villas, Offsite Manufacture, Kingston, Jamaica
1 set residential tunnel form. Interestingly here the construction company uses normally in situ cast tunnel form utilizing offsite methodology. The wall and slab units are cast in the factory on ready prepared concrete bases. Units are then fully fitted out and painted and delivered to sites all over Jamaica and fitted in multiples of one, two or three bedroom homes on raised foundation pads. Company currently markets three different sized alternative homes. The ultimate in natural disaster resistant quality affordable housing.



Residential Apartments, Riga, Latvia
A project in Europe successfully completed in the wilds of winter



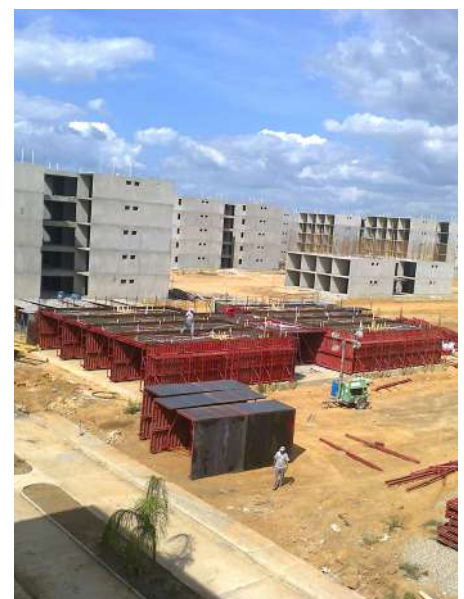
The Hues Mega Project, New Delhi, India
Residential tunnel form system



Rebuilding after the 6th February 2022 Earthquake in Eastern Türkiye
Dema has been both heavily involved and has completed multiple rebuild projects with the Tunnel Form System, the preferred method of construction for the Turkish government to rebuild after the Earthquake disaster on February 6th 2022 that devastated eastern Türkiye.



Residential Apartment Complexes, Guisimal, Maracay/ Venezuela, South America
Dema Formworks were the first company to deliver tunnel form to Venezuela to build on two project in the country. Dema were very pleased to supply tunnel form sets and know how to projects in Guisimal (2500 units) and Maracay (1800 units) in Venezuela, South America





HES

NATM

Rail

6m

12m

Segment

Metro

Manhole

**BOX
CULVERTS**

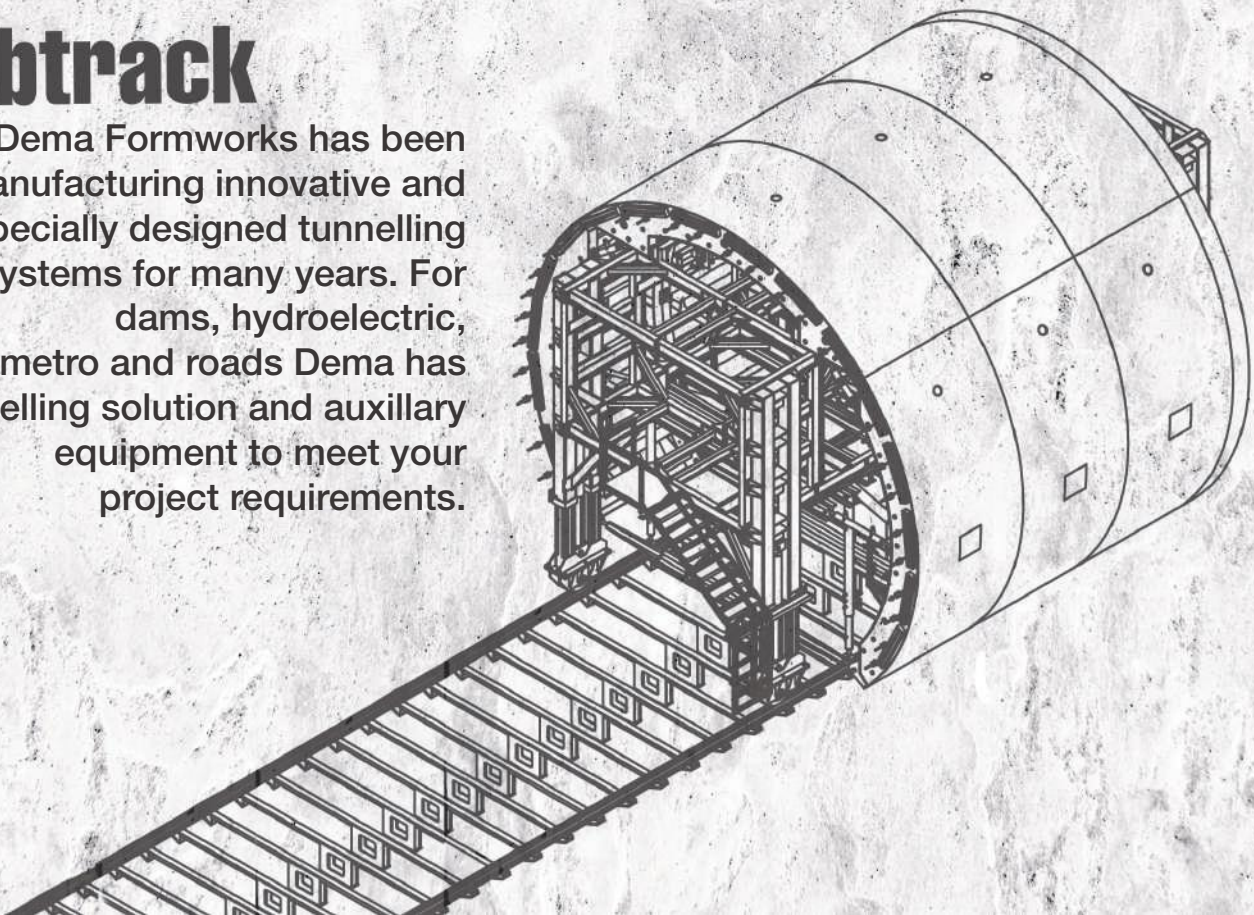
Blacksmiths Cart

INFRASTRUCTURE FORMWORK

Slabtrack

Dema Formworks has been manufacturing innovative and specially designed tunnelling systems for many years. For dams, hydroelectric, rail, metro and roads Dema has a tunnelling solution and auxiliary equipment to meet your project requirements.

High Speed Train Tunnels



Hydroelectric (HES) Plant, Batum, Georgia
Dema supplied a special design and manufactured pipe formwork and infrastructure tunnelling formwork for the hydroelectric plant in Georgia



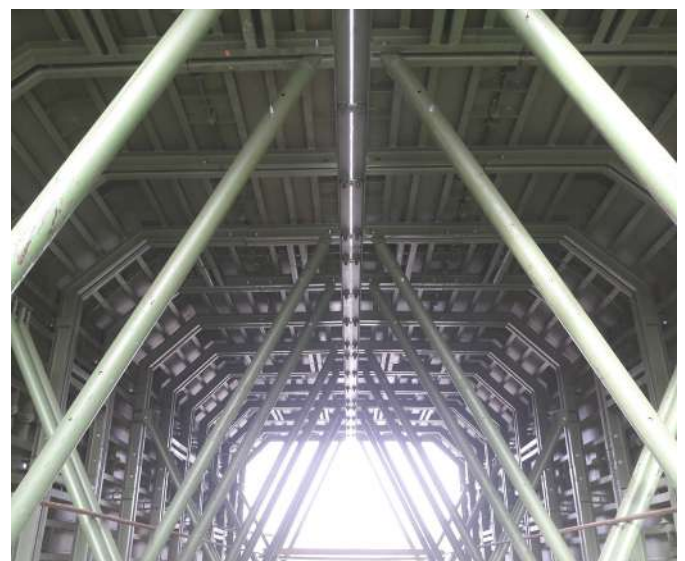
Tunnels for High Speed Train (HST) systems in Ankara, Türkiye
3 specially designed square hydraulic cut and cover type infrastructure tunnel formwork units used to lay 3kms of tunnels.



Various infrastructure tunnels manufacturing



Box Culvert Formwork, Erbil, Iraq



Water Sewage Project, Mosul, Iraq



Invert Formwork, Mosul, Iraq



Blacksmiths Cart, Türkiye





Bridge Footings

**Vacuum Room
Prestressed
Double/Twinwall
Segment**

Post Stressed

Carousel

Stadium Seating

Foundation

Battery Panels

Prefabricated

Turn Key Concrete Factory

Electrical Substation

Turnkey Precast Factory

Girder

Twin Wall

Manhole

Piling

Beam

Peir

Automation

Tilt Up

Retaining Walls

Box Culvert

Slabtrack

Jersey Barriers

PRECAST FORMWORKS

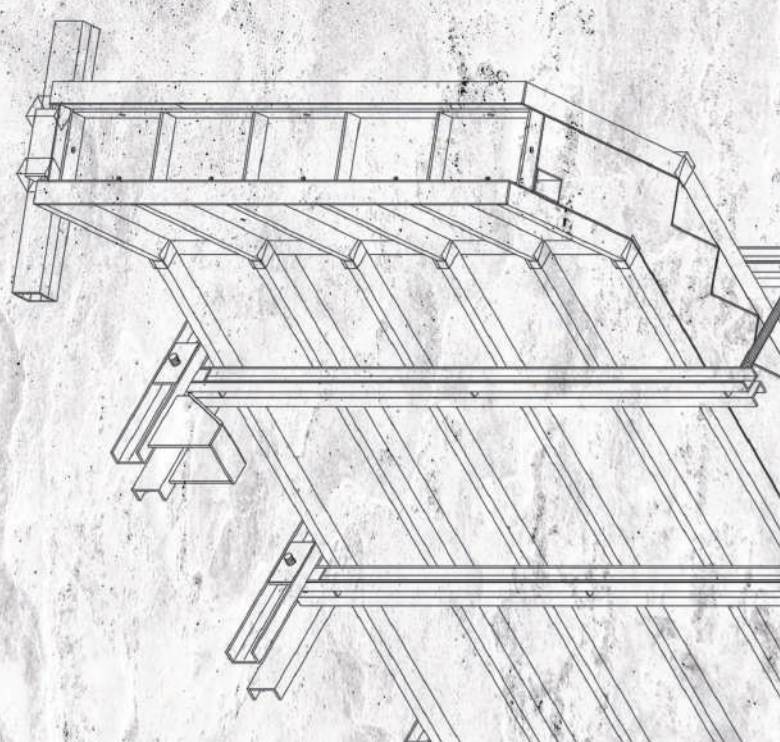
Multi Battery Formwork

Trench Shoring

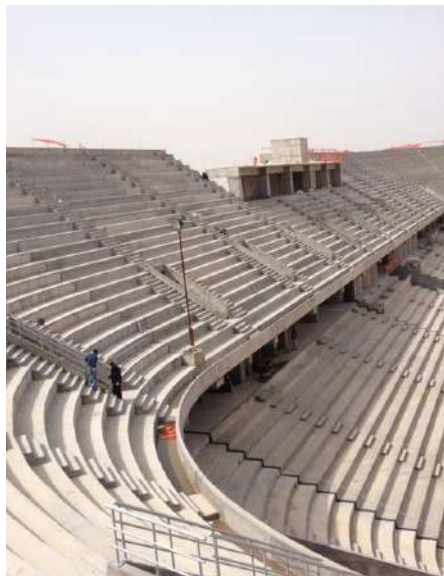
Precast design can only be described as an 'ocean' in terms of possibilities . There is almost no limit to the design possibilities.

From a simple table to produce wall panels to pilings formwork to the most complicated concrete distributions systems and carousel manufacturing lines and outsource manufacturing Dema Formworks can assist you in shaping concrete.

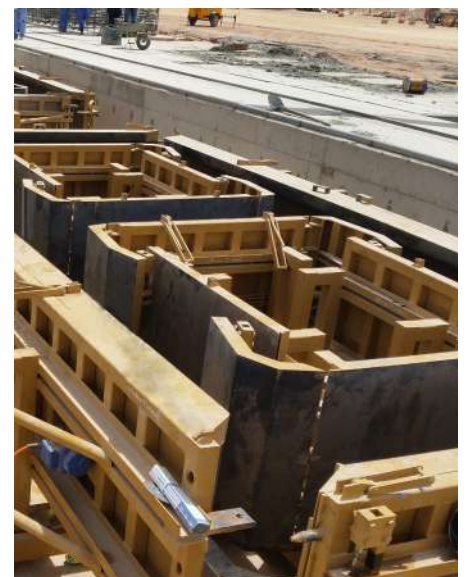
Dema Formworks have the know how to provide cost effective solutions giving you reliable results in your casting... time after time.



Stadium Precast Formwork World class stadiums include:
Krasnodar - Russia, Karbala - Iraq, Beşiktaş - Türkiye



Box Culverts / Manhole Moulds - Riyadh, Kingdom of Saudi Arabia
Dema won the contract to manufacture 40 sets of single and double fully hydraulic ally controlled box culverts to produce the piping for the cities newly installed infrastructure drainage system works 2016 - ongoing. An astonishing 440,000 culverts to be cast.



I, H, L, T, TT Beams (Girders)
Various national and international locations



Transformer Substations Ankara, Türkiye & Madrid, Spain
Turnkey Manufacturing Facility including formworks for transformer mould casting, turning tables, roof moulds, transportation rails, concrete distribution systems (CDC) and concrete buckets.



Precast Tables - Flat, Tilting & Battery Types
Various national and international locations



Railway Sleeper Moulds- Dema Formwork manufacture a range of sleeper moulds eg B57, B07, B70 Slabtrack
Various national and international locations



Factory & Industrial Unit Precast Formwork Moulds for turnkey construction
Various national and international locations



Dema design and manufacture the full formwork moulds required to cast turnkey precast concrete factory and industrial units.
Various national and international locations



Slabtrack formwork Ankara, Türkiye
Manufactured for one of the worlds leading manufactures of precast slabtrack suppliers and installers, based in Türkiye. Manufactured to precise standards Dema Formworks produces slabtrack sleeper moulds for new lines and retrofit application servicing rail traffic requirements of trains around the world delivering people and goods safely day in day out.



Baban Autobahn Bridges, Sulaymaniah, Iraq
Turnkey solution from formwork to all accessories like vibrators, steam chamber, pre-stressing eqips etc.



Undercity Main Drainage System, Riyadh, Kingdom of Saudi Arabia
33 sets single and double box culverts covers. Fully hydraulic controlled internal and external closing mechanism. Now casting culverts at precast factory outside Riyadh to produce 44,000 culverts for main drainage under Riyadh city centre

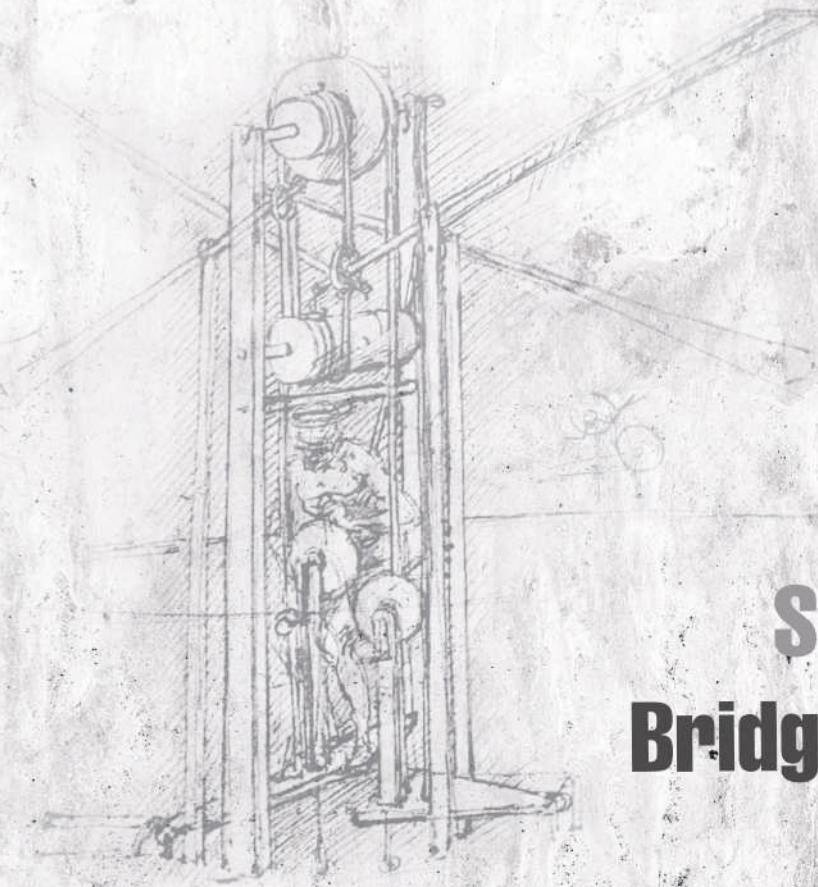


Precast Monolock Substation Formwork, Madrid, Spain
One of many such cabin moulds manufactured for our longest serving client in Spain
and their sister company in France



Precast Culvert Factory Samsun, Türkiye Single type manhole
Various national and international locations





Tilt Up

Beam

Solution

Self Climbing

Bridge Pier Head

Twin Wall

Double Wall

Wall

Column

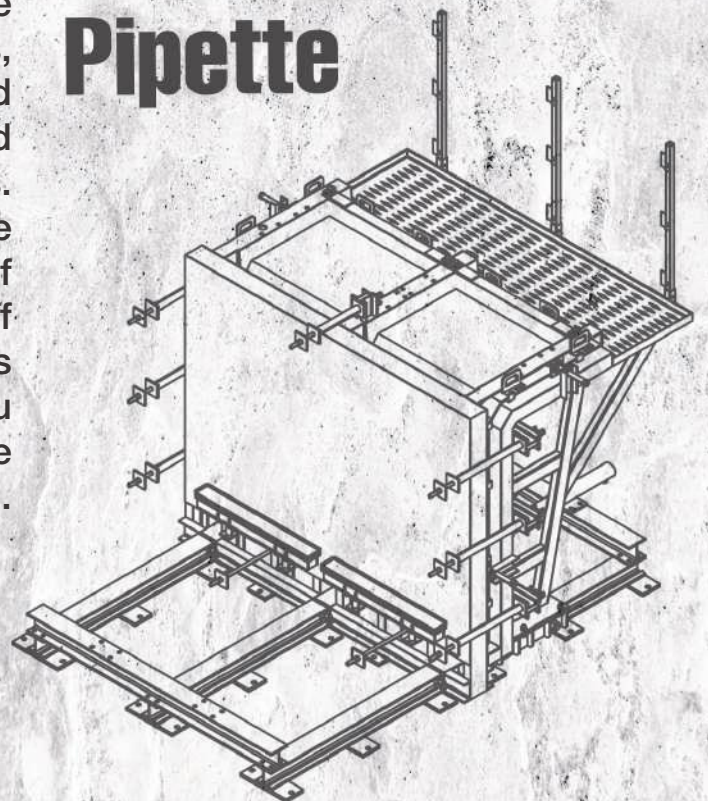
IN SITU FORMWORKS

Bomb Resistant Walls

Dema Formworks product range include conventional props, scaffolding and plywood based formworks, table formwork and climbing formwork systems. together these make up the mainstays of in situ casting of flexible and complex one off form shapes. Dema Formworks also offers a bespoke in situ design service for more challenging and unique projects..

Bridge Footing

Pipette



Hydroelectric (HES) Plant, Batumi, Georgia
Dema supplied a special design and manufactured pipe formwork and infrastructure tunnelling formwork for the hydroelectric plant in Georgia

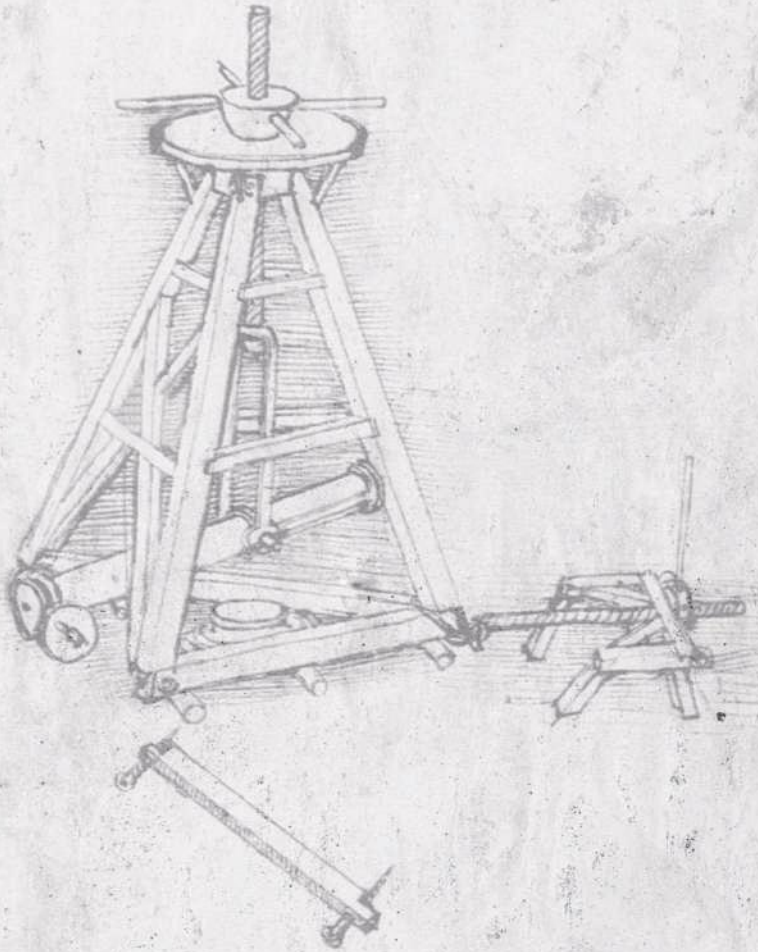


Bridge Footer Header & Column & Retaining Wall Formwork
Various national and international locations



Bridge Footing Column Self Climbing Formwork
Various national and international locations





NDA

Trustable

Mass Production

Specialist

Timely

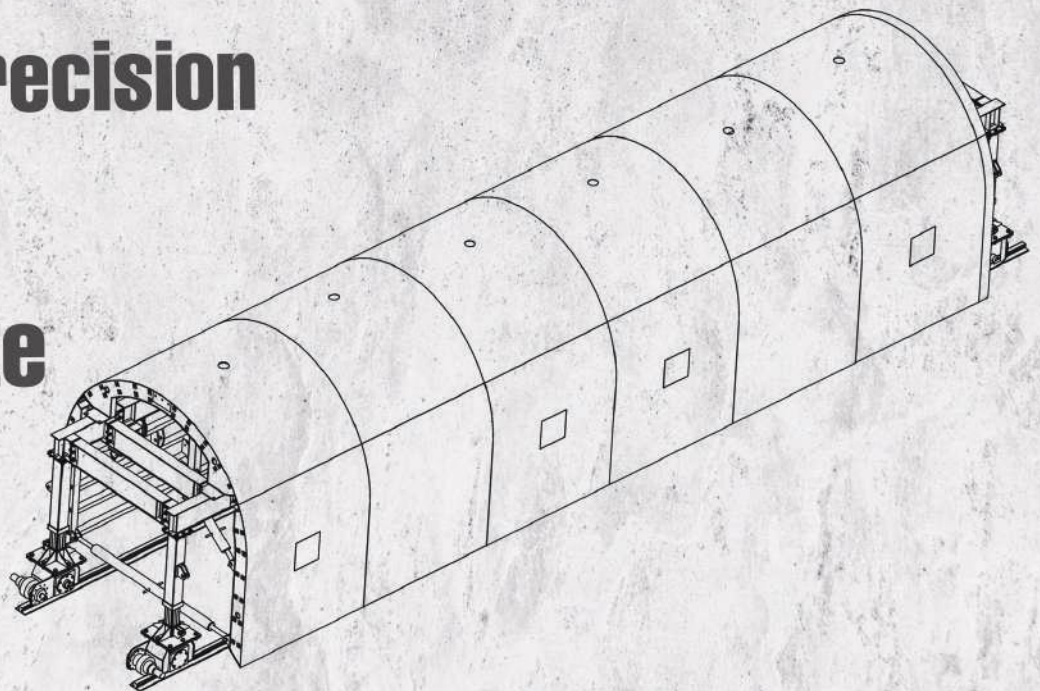
SPECIAL MANUFACTURE & OUTSOURCE

Design

Precision

Concrete

Steel



Concrete Distribution Systems
Various national and international locations



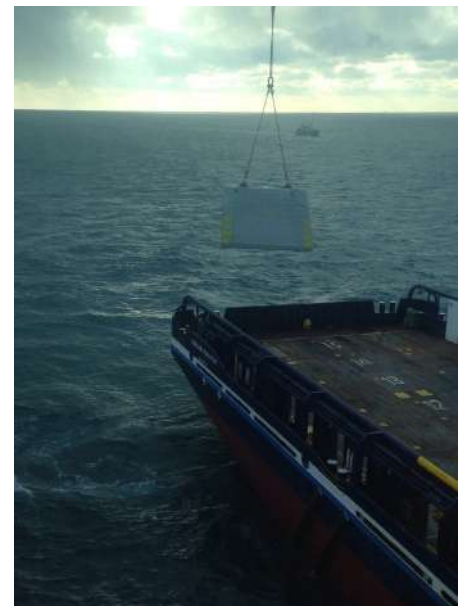
Auxillary Manufacture
Various national and international locations



Auxillary Manufacture
Various national and international locations

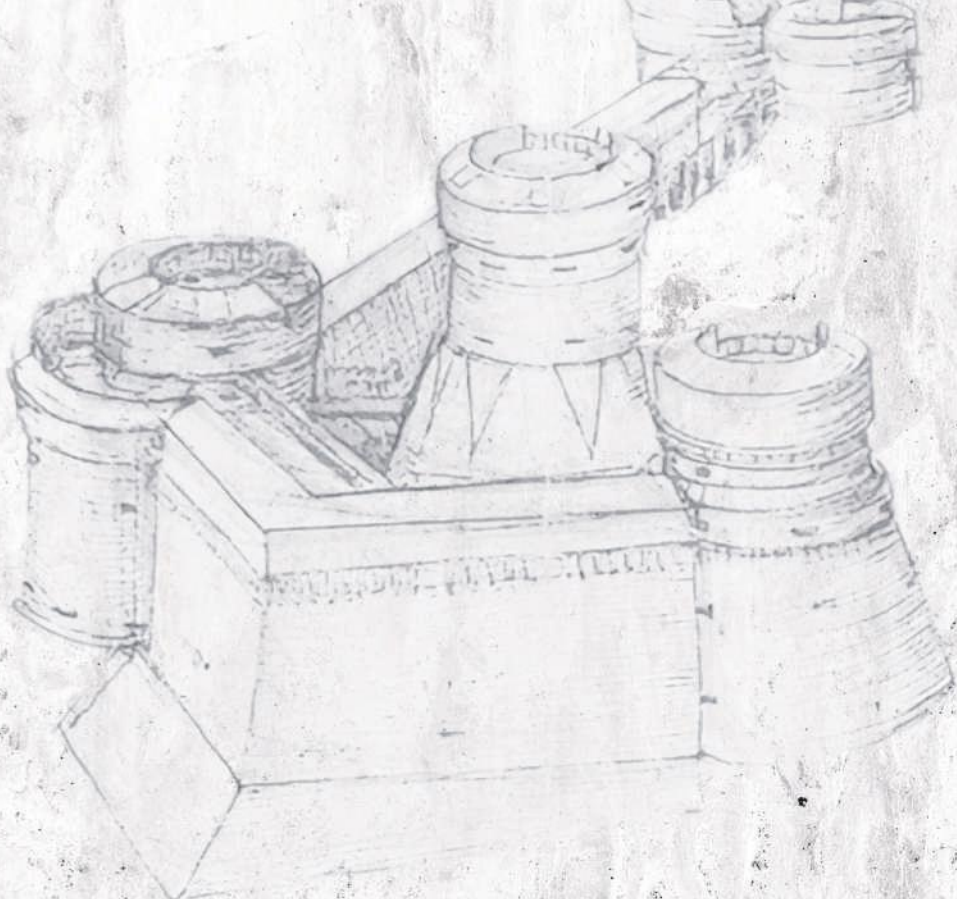


Undersea Gas Pipe Protection Culverts Black Sea, Türkiye
,Our client, an Australian international marine engineering company commissioned Dema to make 10 culverts each of 33 tons to be used by their client. Allseas to project the gas pipe on the Southsteam project in the Black Sea near the Russia coast. Starting out as just manufacturing the culvert mould the scope developed into turn key delivery including concrete casting fitting with anodes and padeyes and load testing. Two months later, 3 more culverts of a different 44 ton design also were made.



Vacuum Chamber, Germany.
Precise high specification project requiring high standards of certified and tested welding





Architectural

Military Towers

Vacuum Chamber

Steel Building

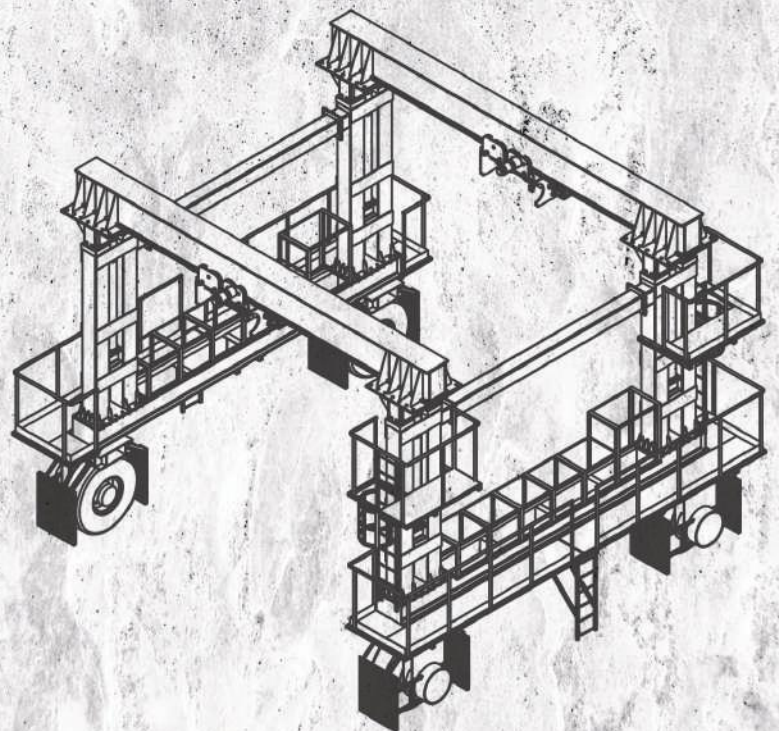
Steel Factory

Steel Commercial Buildings

STEEL DESIGN PROJECTS & MANUFACTURE

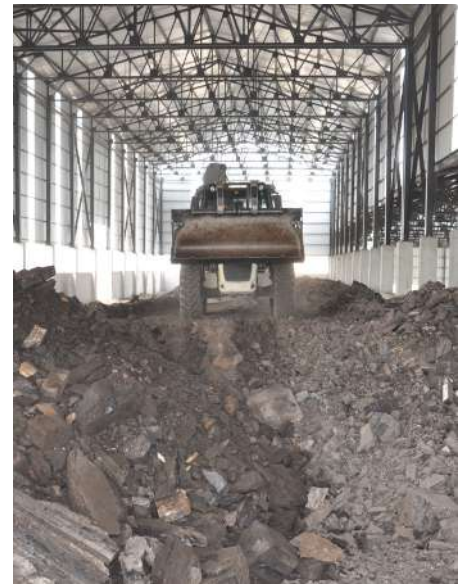
Special Design

Highrise Building

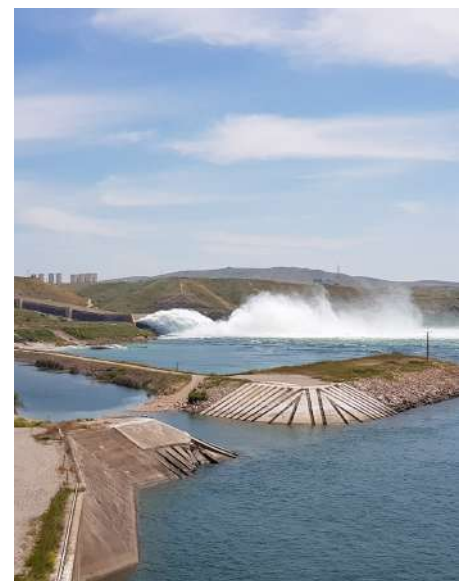


Airport

Turnkey Coal Processing factory, Ankara, Türkiye



Mosul Dam Dentates Steel Construction, Mosul, Iraq
This dam is known as the heart of Mosul and under the auspices of the US Engineering Corps, Dema were tasked with installing new water speed control dentures and completing other repair and maintenance works.



Watchtower / Communication Platform Kabul, Afghanistan
Dema proudly built and installed watchtowers / communication towers for the US
Engineering Corps at bases in Afghanistan

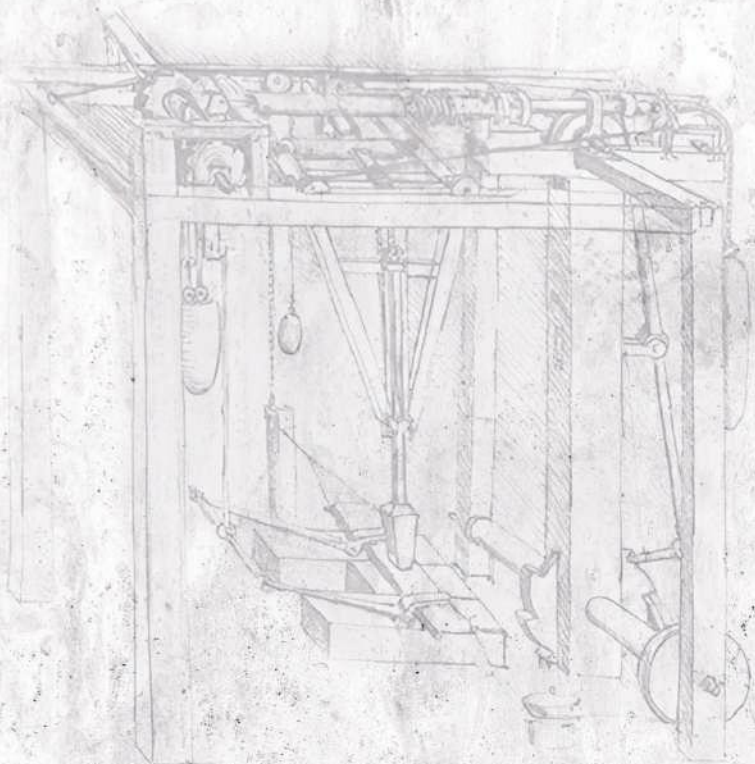


Mosul Badush Bridge, Mosul, Iraq
Dema won the contract to manufacture this steel bridge which is indispensable in the city



Various steel manufacturing projects





Engineering

Villas

Highrise

Hotels

Subcontracting

Contracting

Residential

Daily Casting

Student Dorms

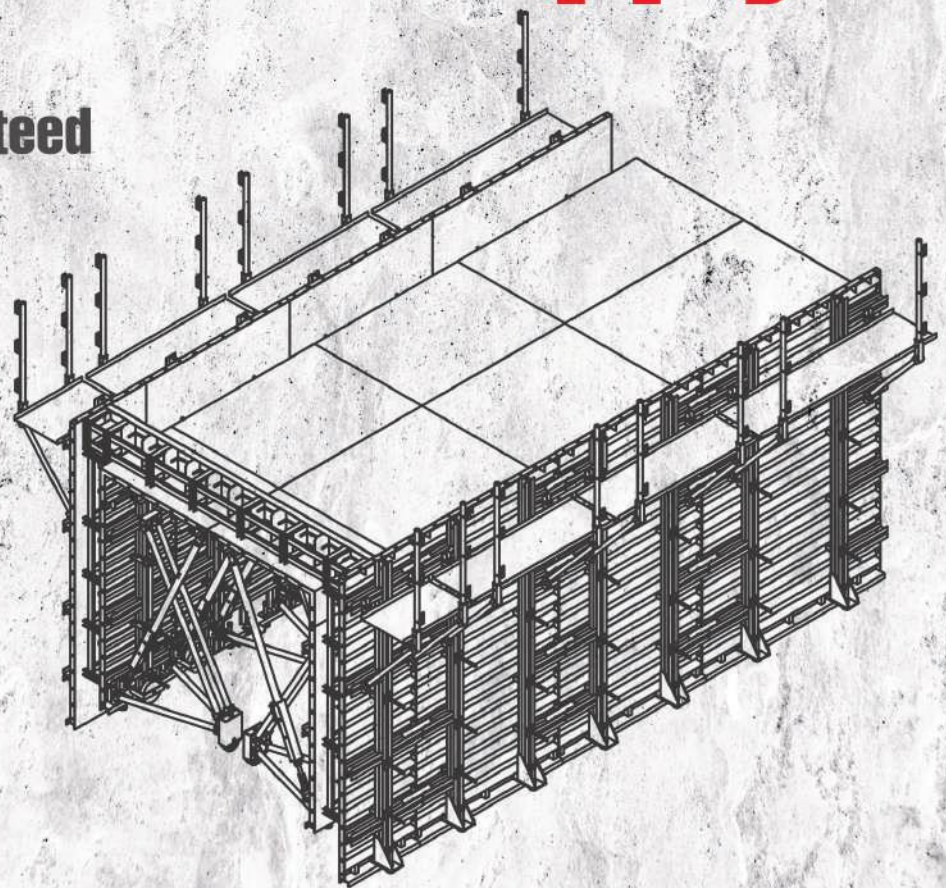
Apartments

Tunnel Form Apply

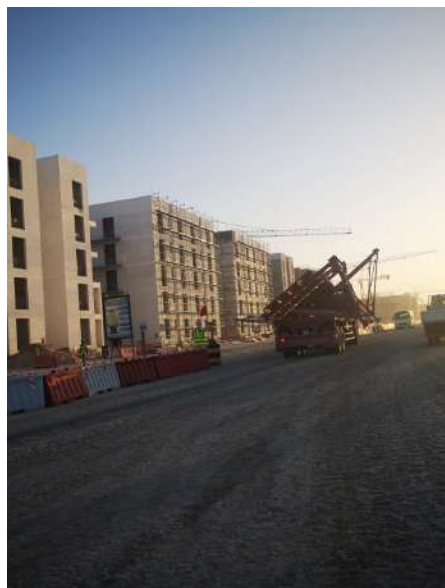
24 H Cycle

Guaranteed

Quick Build



Residential Mini City and Workers Accomodation sites, Doha, Qatar
The creation of a mini city for the Qatar World Cup. The whole project of 6780 apartment completed on time for the football spectacular. Tunnel form construction completed the shell superstructure of 76 building G+5 in just 11 months



3.000 Double Storey Villas, Al-Najaf, Iraq
Villas completed at a rate of 4 villas daily and 100 villas per month including parapet walls and perimeter walls



مركز المبيعات - شارع حي الأمير حي الزهراء - بالقرب من قاعة عشار
رقم الموبيل (0782626222) او (0782626225)

الاستشاري

7.500 Double Storey Villas Tunnel Form Construction - Baghdad, Iraq
Continuation project with the same companies that commissioned 800 villas another
7,500 villas are now underway



Worldwide

Technical Support

5 Continents

Customer Service

Pride in Work

REFERENCES

40+ Countries

Repeat Custom

Service Team



With reference projects in 40+ countries over 5 continents Dema Formworks is becoming a truly global precast, formworks and structural steelworks company. With projects design, manufacture and technical support offered from the factory in Türkiye and sales and service and distribution network handled from the UK office, Dema Formworks operations are streamlined for maximum efficiency. This way Dema can supply service and support to projects worldwide keeping the supply chain constant and the resulting costs to the end user to a minimum.



European Continent

- Türkiye
- United Kingdom
- Bosnia and Herzegovina
- France
- Germany
- Hungary
- Italy
- Kosovo
- Latvia
- Lithuania
- Norway
- Romania
- Spain

Australia Continent

- Australia

Asian Continent

- Afghanistan
- Azerbaijan
- Bangladesh
- Georgia
- India
- Iran
- Iraq
- Israel
- Kazakhstan
- Kyrgyzstan
- Mongolia
- Qatar
- Russia
- Saudi Arabia
- Turkmenistan

- United Arab Emirates
- Uzbekistan

African Continent

- Algeria
- Djibouti
- Ethiopia
- Ivory Coast
- Libya
- Mauritania
- Tunisia

American Continent

- Argentina
- Jamaica
- Venezuela

Please note Dema policy is one of continuous development and product improvement. Information in this literature and product range may be subject to change without notice.

Dema Formworks has a range of literature, product animations and timelapses on our website www.demaform.com and online.

PRODUCT RANGE BROCHURES



SEE DEMA'S HANDBOOK & PRODUCT BROCHURES HERE



COMPANY VIDEOS



SEE DEMA'S ANIMATIONS, TIMELAPSES & TECHNICAL VIDEOS HERE



IMAGE LIBRARY



SEE DEMA'S PROJECT & MANUFACTURING PHOTOS HERE



COMPANY NEWS



SEE DEMA'S LATEST COMPANY & PROJECT NEWS HERE



Search 'Dema Formworks' on ISSUU, YOUTUBE & VIMEO also follow us on TWITTER, INSTAGRAM, FACEBOOK, PINTEREST and LINKEDIN for upto date company and product news. If you would like to be added to our mailing list, please send an email to info@demaform.com with the the heading 'ADD TO MAILING LIST'

Performance

R&D

Creativity

Research

Design

Functional

UPCOMING PROJECTS

Technical

Development

Modernisation

Increased Productivity



DEMA FREESTYLE LIFTS ' Your Freedom to move....'

Dema is proud to announce that with the support of the governmental led TUBITAK (Scientific and Technological Research Council of Türkiye) program; we will be introducing in 2025/2026, Türkiye's first and only shuttle lift system with differing models offering 20t to 100t carrying capacities Suitable for precast factories, stone yards, heavy steel manufacturers, ports and docks and any manufacturing companies with the need for flexible, changing use of storage areas and maximizing space and plant mobility. Currently our first model is under assembly and testing at the factory

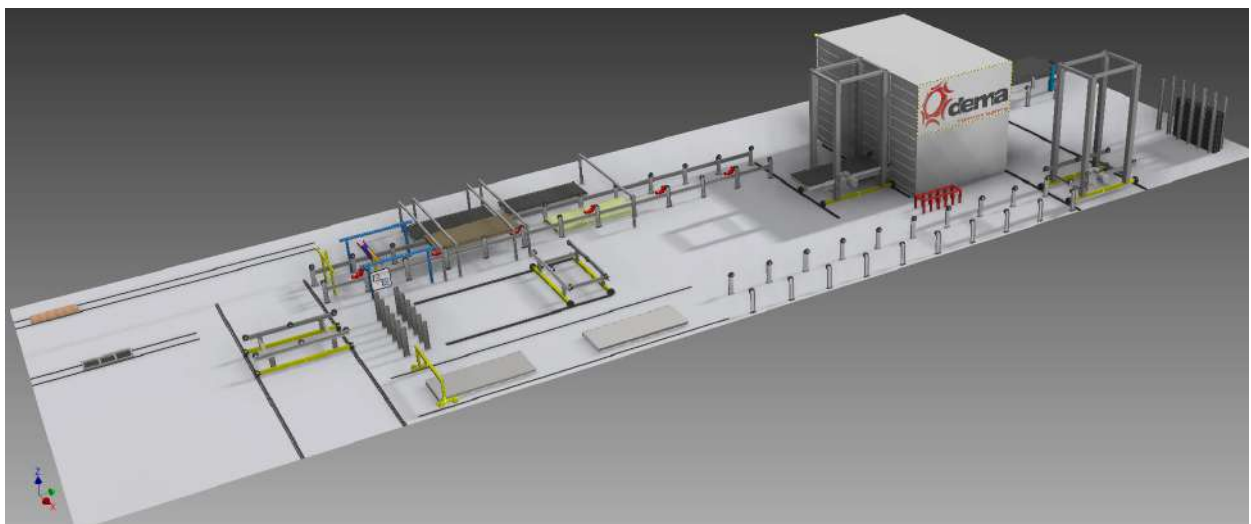


Research and development realized in cooperation with the governmental backed Scientific and Technological Research Council of Türkiye



DEMA PRECAST CAROUSEL SYSTEMS

Dema for many years has been manufacturing part and complete systems for leading European automated precast carousel system manufacturers and direct turnkey services to precast factories. owners. With knowledge and technical experience gained over the years, Dema is now able to offer full turnkey precast factory automated carousel manufacturing plants. Please contact us with your project specifications or ideas.



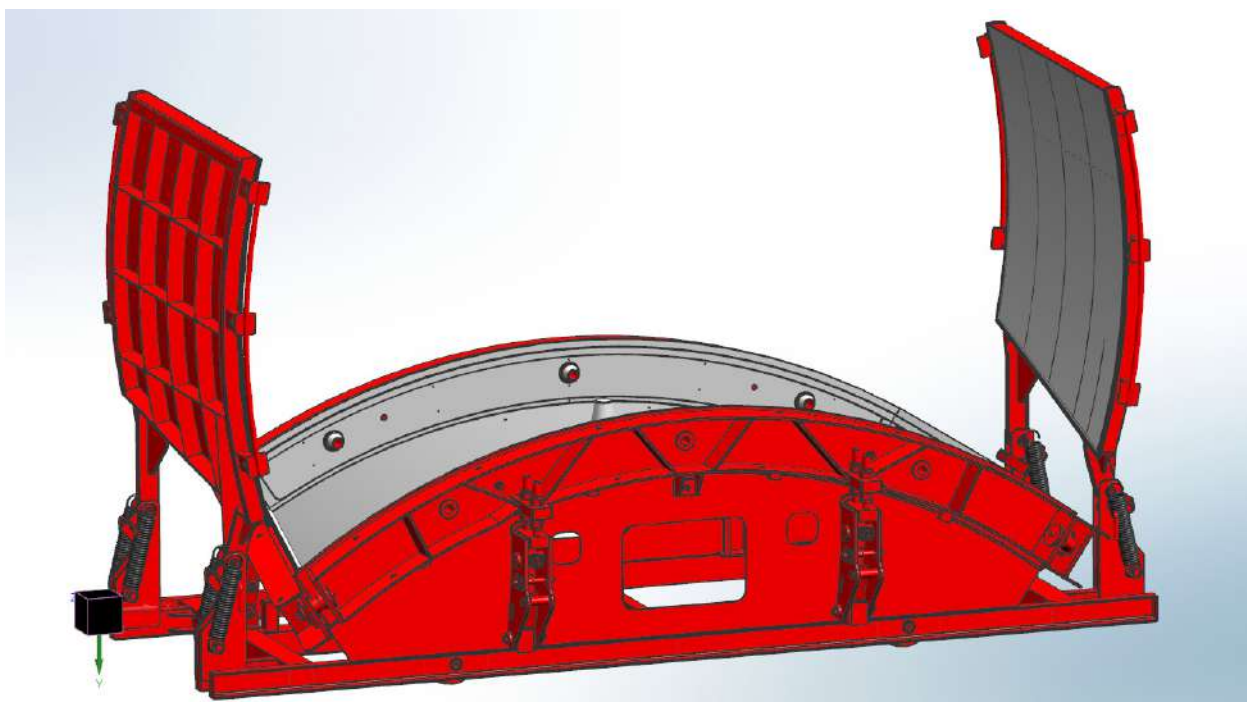
DEMA SEGMENT FORMWORK

As well as achieving great height (and depths) in design and manufacturing experience in a multitude of NATM tunnelling formwork projects, Dema is proud to offer precision made segment moulds for the modern TBM method of tunnel production.

In TBM tunnelling the segments have different design types depending on the ground/soil specifications and project specifics. The shape, generally a circle, is formed by segment pieces being precisely attached together and is called a “ring”. All segment patterns that make up a ring are expressed as “1 set”. The segmental parts to the tunnel enable the TBM to move in different directions within the tunnel. Rings are used in different thicknesses and diameters in TBM tunnel projects. These diameter changes change the number and geometry of the precast concrete segments that make up the ring. The keystone segment is the last piece placed to complete the ring and ensures that the segment ring is stabilized. The alignment is vitally important in terms of up-down, right-left movements of the tunnel. Each segment is coded for correct sequence.

The excavations for underground tunnels for Dams, Metro, Wastewater, Drinking Water, Hydroelectric projects and irrigation projects, utilize specialized high grade concrete to provide the tunnel with strength, safety and to reduce project durations and therefore costs considerably. The TBM excavates the tunnel on the one hand, whilst behind the excavations and soil removal the individual precast concrete segments produced from the precast segment moulds are installed consecutively and are placed in the form of rings. It is due to the the segments arranged by these TBM's that no additional support or work is required.

DEMA Formwork guarantees the durability and dimensional consistency of our segment moulds produced from our bespoke segment formwork systems. Dema Segment Moulds, the choice for dimensionally accurate precision engineered and ultimately durable moulds and for your trouble free production of concrete interlocking segment tunnel pieces.



DEMA PORTABLE PRECAST PLANT

New for 2025 Dema is introducing the DEMA PORTABLE PRECAST FACTORY (DPPF)

The DEMA Portable Precast Factory is a fully flexible and ultimately modular and scaleable solution for precast manufacture in remote or temporary locations, it is quick to install and it supports many types of building and precast construction methods. It is a mobile solution that can adapt optimally to your changing mobile precast project requirements. Imagine a mini city and its infrastructure of road and rail miles away from other towns or a new development from away good logistics and manufacture infrastructure. the DEMA Portable Precast Factory can be set up quickly and that city can be made starting with the roads and infrastructure through to housing and commercial and industrial units.

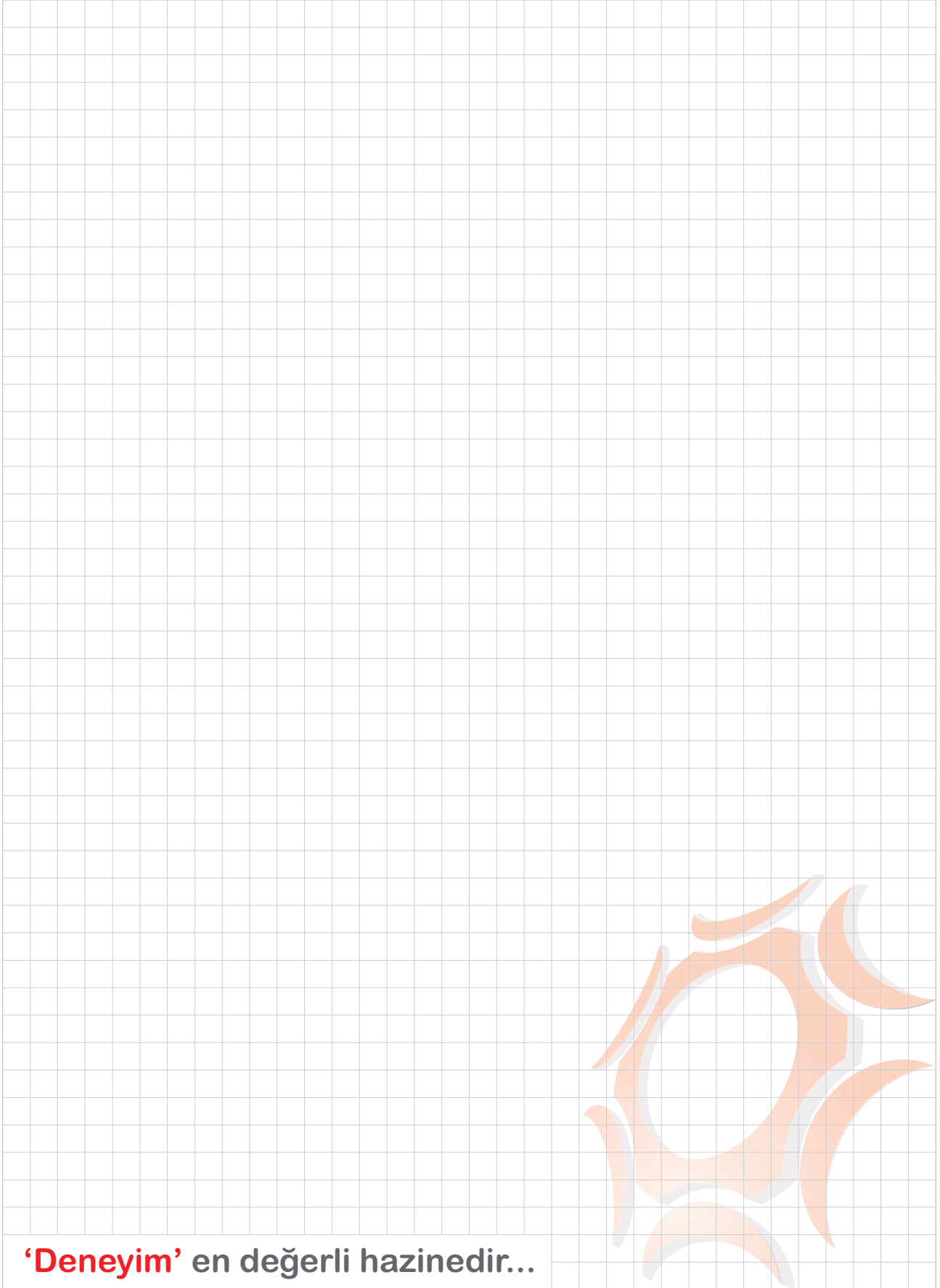
Currently our DPPF precast system can be adapted to produce complete modular stand alone 'room' units for villas, apartments, or townhouses, terraced homes, single or multistorey residences and for the construction of mass social housing in remote locations. The limits are currently structures 5m wide by 12m but interconnectable according to your architects designs long but your special requirements can be discussed.

The system can also be used for producing precast elements for infrastructure or for house and commercial facility construction such as wall panels, columns beams girders and floor solutions. . The same technology can be used for renewable energy such as transformer substation electrical cabins, solar energy storage units, garages, infrastructure and the oil and gas sector, it can even be adapted easily to the production of slabtrack and railway sleepers for trainlines being built across deserts or for jersey barriers for highways connecting countries – everything is achievable.



'Experience' is precious!

...../...../.....



dema
Formwork Systems

dereyim
makina kalip sistemleri

dema
construct

'Deneyim' en değerli hazinedir...

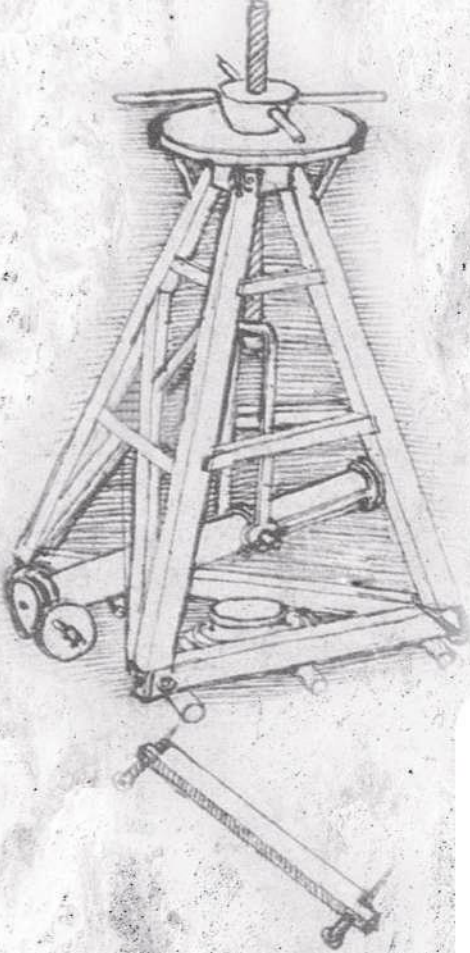
info@deneyimmakina.com



info@demaform.com



Steel Design Artistry



Factory & Head Office Türkiye

Tel: +90 312 395 91 83

+90 312 815 15 44

Fax: +90 312 395 91 84

info@deneyimmakina.com

info@demaform

www.deneyimmakina.com

www.demaform.com

Representative Office



İstanbul Yolu 35. Km Orhaniye Mah. Orhaniye Küme Evleri No: 330 Kahramankazan / ANKARA / TÜRKİYE

Tel: +90 312 395 91 83 | +90 312 815 15 44 Fax: +90 312 395 91 84